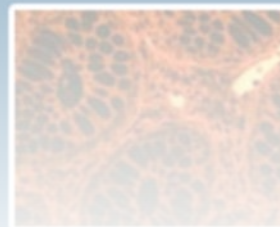
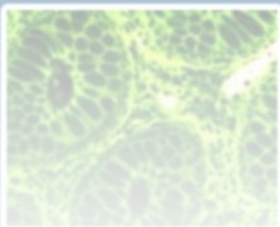
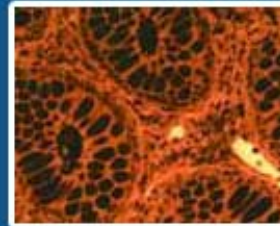
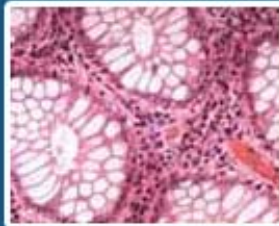
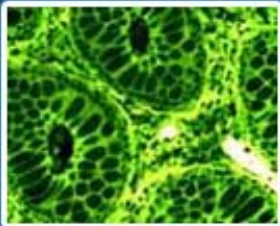


# BK-FL Fluorescent Microscope

---



## Specification:

Items	Specification	BK-FL2
<b>Eyepiece</b>	WF10×-20 mm	● ●
<b>Infinity Plan Objective</b>	4x	●
	10x	●
	20x (s)	●
	40x (s)	●
	100x (oil) (s)	●
<b>Trinocular Head</b>	Inclined 30°, Rotatable 360° Interpupillary Distance: 55-75mm, Light Distribution: 0:100	●
<b>Nosepiece</b>	Quirtuple	●
<b>Mechanical Stage</b>	Stage size: 190mm×140mm Travel: 55mm×78mm Coaxial Coarse and Fine Focusing Knobs	●
<b>Condenser</b>	Abbe N.A. 1.25 (Iris Diaphragm)	●
<b>Fluorescence Unit</b>	Fluorescence Illuminator (B,G)	●
	100W Mercury Bulb House	●
	100W Mercury Bulb Power Source	●
	Centering Objective	●
	110V/220V/100W Mercury Bulb, Spare: 1 pc	●
	5A Fuse, Spare: 1 pc	●
<b>Koehler Illumination</b>	6V/20W Halogen Lamp	●
<b>2A Fuse</b>	Spare: 2 pc	●
<b>Filter</b>	Blue	●

**BK Fluorescence Microscope Dimensions:**

